

# Why Organize an IDeA Subcommittee ?

Liz Knapp, Assistant Director  
KY Statewide EPSCoR Program  
7<sup>th</sup> KIEC & 16<sup>th</sup> KY EPSCoR Conference  
Galt House East, Louisville, KY



May 26, 2011





# What is KY EPSCoR?

- A research infrastructure building program for Kentucky's colleges & universities



# What is KY EPSCoR?

- A research infrastructure building program for Kentucky's colleges & universities
- A federally initiated– state matched partnership



# What is KY EPSCoR?

- A research infrastructure building program for Kentucky's colleges & universities
- A federally initiated– state matched partnership
- A source of funding for STEM research in the areas of:
  - **Material Science & Advanced Manufacturing**
  - **Human Health & Development**
  - **Environmental & Energy Technologies**
  - **Biosciences**
  - **Information Technology & Communications**

# What is Our Mission ?

- The mission of KY EPSCoR is to help the Commonwealth's universities become more competitive in pursuing Federal R&D awards.





# What are our Goals?

- For faculty:
  - Independent federally funded researchers
- For the state:
  - Establishing Research Centers of Excellence

# EPSCoR Funded Centers & Initiatives

- **CAM**                    Center for Advanced Materials   UK
- **MNTC**                Micro/Nano Technology Center   UofL
- **CeNSE**                Center for Nanoscale Science and Engineering   UK
- **KY NanoNET**        collaborative network statewide
- **ERTL**                 Environmental Research and Training Lab   UK
- **ERI**                    Eastern KY, Environmental Research Institute   ECU
- **VOEIS**                Virtual Observatory & Ecological Information System   Murry
- **KY SPACE**           collaborative, UK & Morehead
- **VisCenter**            Center for Visualization & Virtual Environments   UK
- **NOVA**                 Nondestructive Analysis Center   WKU
- **Bioengineering**        UofL & UK
- **Metabolomics**        UofL
- **Genomics**             UK
- **Proteomics**            UK

# How Do We Accomplish Our Goals?

- Nurturing research talent



# How Do We Accomplish Our Goals?

- **Nurturing research talent**

- RSF, NLI, CRDP, RSP, REG, COBRE, INBRE, Space Grant, student internships, graduate research fellowships, Girls STEM Collaborative mini grants



# How Do We Accomplish Our Goals?

- **Nurturing research talent**
  - RSF, NLI, CRDP, RSP, REG, COBRE, INBRE, Space Grant, student internships, graduate research fellowships, Girls STEM mini grants
- **Coordinating R&D interests:**



# How Do We Accomplish Our Goals?

- **Nurturing research talent**

- RSF, NLI, CRDP, RSP, REG, COBRE, INBRE, Space Grant, student internships, graduate research fellowships, Girls STEM mini grants

- **Coordinating R&D interests:**

- Annual conference,
- sponsoring workshops, events
- statewide committee meetings, members from academia (6 comprehensive, + 2 research institutions), industry,
- Subcommittee organizational structure



# State Level Program Organization

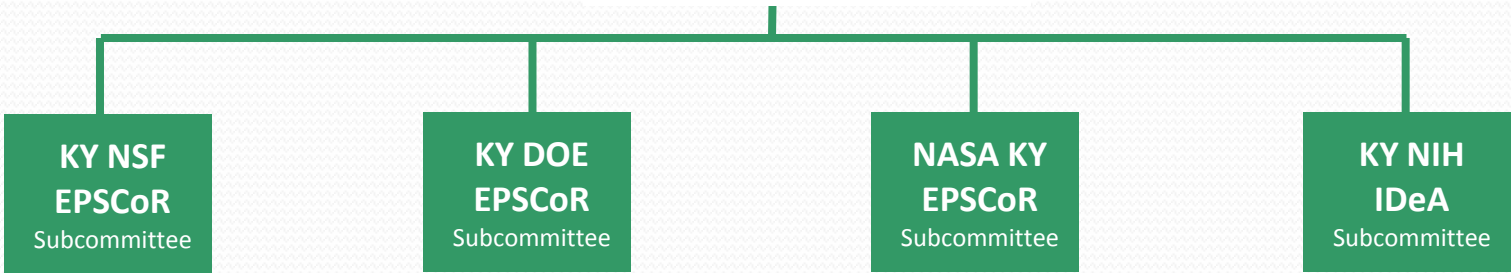


**Kentucky Statewide EPSCoR Committee**



**Director of Statewide EPSCoR Program**

[www.kyepscor.org](http://www.kyepscor.org)



**UK**

**UK**

**UK**

**UofL**

[www.kynsfepscor.org](http://www.kynsfepscor.org)

[www.kydoeepscor.org](http://www.kydoeepscor.org)

[nasa.engr.uky.edu](http://nasa.engr.uky.edu)

[www.kbrin.louisville.edu](http://www.kbrin.louisville.edu)

# How Do We Accomplish Our Goals?

- **Nurturing research talent**
  - RSF, NLI, CRDP, RSP, REG, COBRE, INBRE, Space Grant, student internships, graduate research fellowships, Girls STEM mini grants
- **Coordinating R&D interests:**
  - Annual conference,
  - sponsoring workshops, events
  - statewide committee meetings, members from academia (6 comprehensive, + 2 research institutions), industry,
  - Subcommittee organizational structure
- **State Support** – annual program funding through CPE
  - House Bill 572, 2000 Kentucky Innovation Act (KIA)



# How Do We Accomplish Our Goals?

- **Nurturing research talent**
  - RSF, NLI, CRDP, RSP, REG, COBRE, INBRE, Space Grant, student internships, graduate research fellowships, Girls STEM mini grants
- **Coordinating R&D interests:**
  - Annual conference,
  - sponsoring workshops, events
  - statewide committee meetings, members from academia (6 comprehensive, + 2 research institutions), industry,
  - Subcommittee organizational structure
- **State Support** – annual program funding through CPE
  - House Bill 572, 2000 Kentucky Innovation Act (KIA)
- **Federal level Communication**
  - National Coalition of EPSCoR/IDeA States
  - Washington Council – that has lobbying authority





# Where does the Funding Come From?

## 7 Federal Agencies

- NSF
- DOE
- NASA
- DOD
- EPA
- NIH
- USDA



# Where does the Funding Come From?

## 7 Federal Agencies

- EPSCoR Programs (require state match \$)
  - NSF
  - DOE
  - NASA
  - DOD
  - EPA
- NIH
- USDA



# Where does the Funding Come From?

## 7 Federal Agencies

- EPSCoR Programs (require state match \$)
  - NSF
  - DOE
  - NASA
  - DOD (program suspended in 2010)
  - EPA (program suspended since 2004)
- NIH
- USDA



# Where does the Funding Come From?

## 7 Federal Agencies

- **EPSCoR** Programs (require state match \$)
  - NSF
  - DOE
  - NASA
  - DOD (program suspended in 2010)
  - EPA (program suspended since 2004)
- **IDeA** (Institutional Development Awards)
  - NIH
- USDA



# What are the Funding Sources?

## 7 Federal Agencies

- **EPSCoR Programs** (require state match \$)

- NSF
- DOE
- NASA
- DOD (program suspended in 2010)
- EPA (program suspended since 2004)

- **IDeA** (Institutional Development Awards)

- NIH

- **AFRI** (Agriculture & Food Research Initiative)

- USDA

No state matching



# What are the Funding Sources?

**7 Federal Agencies** + **State Matching** (\$2.5 - \$1.8 million/yr)

- **EPSCoR Programs**

- NSF
- DOE
- NASA
- DOD (program suspended in 2010)
- EPA (program suspended since 2004)

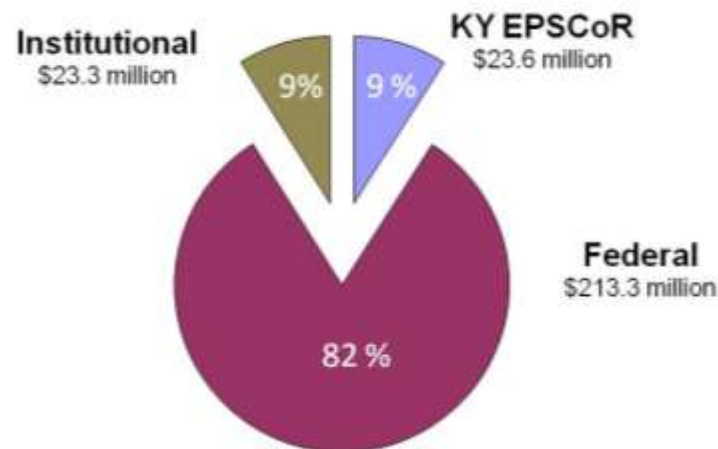
- **IDeA** (Institutional Development Awards)

- NIH

- **AFRI** (Agriculture & Food Research Initiative)

- USDA

EPSCoR Funding to Kentucky 2000-2010



No state matching

# How Much Funding is Available?



## Federal Programs:



## FY 10 Budgets in Millions:

**\$148**

**\$22**

**\$25**

**\$0**

**\$0**

**\$229**

**\$26**

## # of Eligible states

29

25

28

24

26

## KY's FY10 Fed Award Amounts

**\$5.3**

**\$.75**

**\$.62**

**\$21**

**\$1.1**

# Why Organize with KY EPSCoR?

- KY EP is the **primary interface** with Federal Congressional members and the EPSCoR/IDeA Foundation
- **Advocate** for your work at the statewide level
- Good **communication** resources

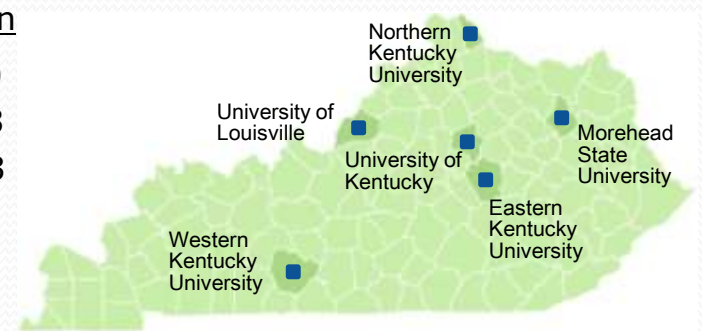


– NIH

## Centers of Biomedical Research Excellence (COBRE)

### Centers at the **University of Louisville:**

<u>Research Focus</u>	<u>Award Total</u>	<u>Yrs in Operation</u>
• Spinal Cord Injury	<b>\$18.5 Million</b>	2000 – 2010
• Cancer Targets	<b>\$21.0 Million</b>	2003 – 2013
• Birth Defects	<b>\$11.6 Million</b>	2002 – 2013
• Diabetes & Obesity	<b>\$ 8.1 Million</b>	2008 – 2013



### Centers at the **University of Kentucky:**

<u>Research Focus</u>	<u>Award Total</u>	<u>Yrs in Operation</u>
• Oral Health	<b>\$23.4 Million</b>	2004 – 2014
• Human Disease	<b>\$21.8 Million</b>	2004 – 2014
• Women's Health	<b>\$21.1 Million</b>	2000 – 2011
• Obesity & Heart Disease	<b>\$ 6.5 Million</b>	2008 – 2013

## IDeA Networks of Biomedical Research Excellence (INBRE)

Expand & connect biomedical research across the state at primarily undergraduate universities:

- Student training & career development
  - Build bioinformatics infrastructure
- \$41.6 Million**      2001 – 2014

# KY Statewide EPSCOR Program

- Nancy Martin, Chair
- Rick Kurzynske, Director
- Liz Knapp, Assistant Director
- [www.kyepscor.org](http://www.kyepscor.org)